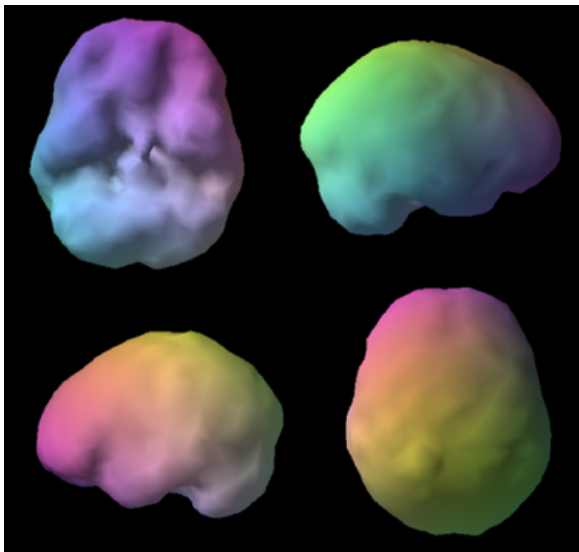


# BRAIN IMAGES REFERENCED IN CHAPTER FOUR

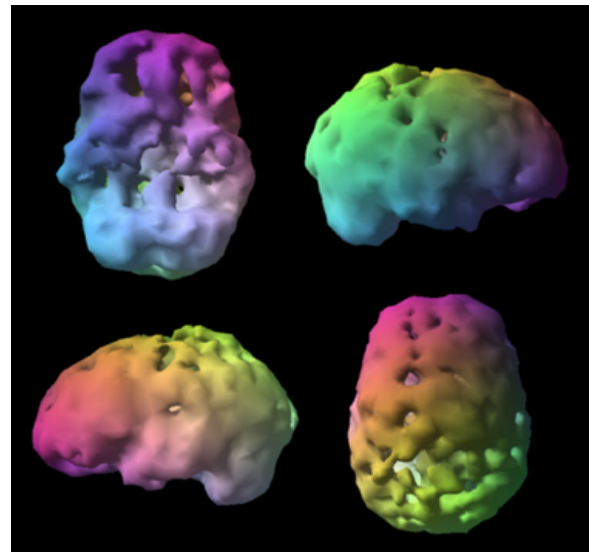
## THE ADOLESCENT BRAIN AND ADDICTION

### A HEALTHY BRAIN



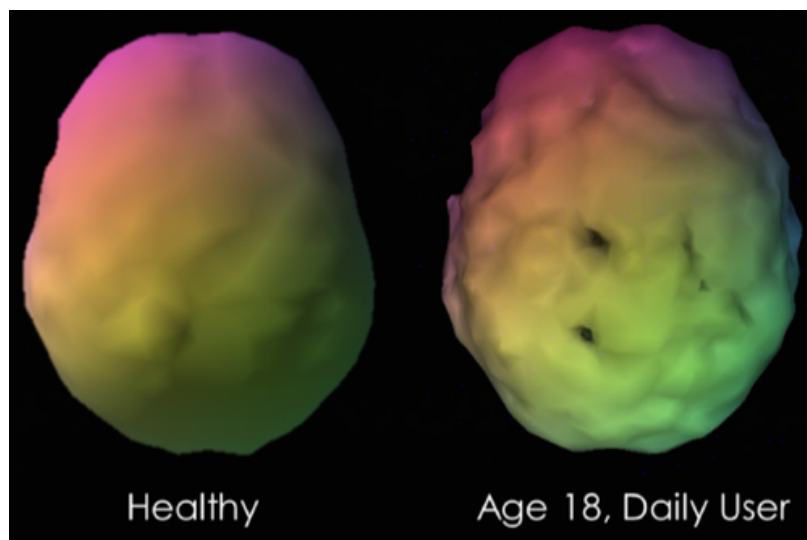
On a SPECT scan, the surface of a healthy brain looks smooth with full and symmetrical blood flow and activity.

### AN UNHEALTHY BRAIN



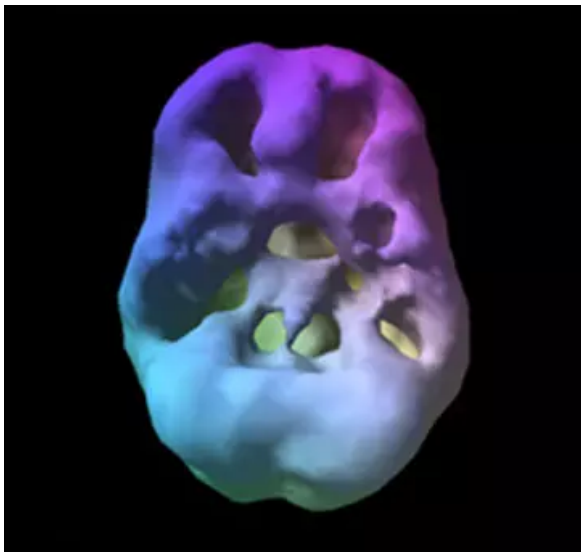
This SPECT image of an unhealthy brain reveals many “holes” on the surface, which represent areas of low blood flow and poor activity because of damage from substance and alcohol abuse.

## HEALTHY VS. THE BRAIN OF A PERSON USING SUBSTANCES DAILY.



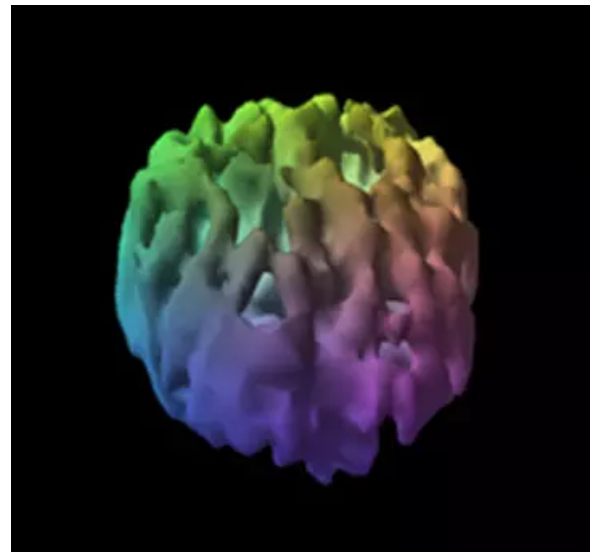
# BRAIN IMAGES REFERENCED IN CHAPTER FOUR

## MARIJUANA'S EFFECT ON THE BRAIN



16-year-old with 2 year history of daily abuse. There is a noticeably decreased prefrontal cortex and temporal lobe activity.

## LONG TERM EFFECTS OF HEROIN



39-year-old with 25 years of frequent heroin use. Marked overall decreased activity.

**IMAGES PERMITTED FOR USE, COURTESY OF AMEN CLINICS.  
[HTTPS://WWW.AMENCLINICS.COM/GALLERY/](https://www.amenclinics.com/gallery/)**